



Powerhouse 2400W 2304Wh Rechargeable Portable Power Station Supply

Our Product Introduction

for more products please visit us on evstationcharger.com

Basic Information

- Place of Origin: China
- Brand Name: MINKO
- Certification: CE, ROHS
- Model Number: Portable Power Station-Q2400
- Minimum Order Quantity: 5 pieces
- Price: negotiation
- Packaging Details: L210xW85xH52 (mm)
- Delivery Time: 8 -10 working days
- Payment Terms: T/T, Western Union, MoneyGram, Paypal, Skrill, Transferwise
- Supply Ability: 1000000 pieces per month



Product Specification

- Rated Power AC: 2400W
- Capacity: 2304Wh
- Power Indicate: LCD Display
- Solar Charging Input: 800W Max
- AC Fully Charging Time: About 2-3H
- Housing Material: ABS+PC
- Operation Humidity: 10%~90%
- Highlight: **2200w lifepo4 battery station, 2304wh lifepo4 solar power station, 2400w lifepo4 solar power station**



More Images



Product Description

Powerhouse 2400W 2304Wh Rechargeable Portable Power Station Supply

Description of Portable Power Station

Portable power station is equipped with 2400Wh LiFePO4 battery pack, which contains upgraded chip, supports fast charging function and more than 3000 recycling times. Pure Sine Wave technology AC outlets deliver stable and safe power, without damage and reduces audible and electrical noise.

Features:

Bidirectional fast charge technology
UL car grade safer lithium iron phosphate cycle life of 3000+
super inverter technology
UPS uninterrupted power supply
2200W rated output
sufficient large capacity 2KWH electricity
modeling IP black gold steel

Apply to: Home emergency, small household appliances, digital products (such as UAV, mobile phone, computer, notebook, camera, handheld head, car refrigerator, etc.), long-distance self-driving travel, outdoor camping, lighting, picnic, wild fishing, environmental monitoring, geological exploration, car electricity, medical equipment and other scenes.

Product Specification

Rated Power AC	2400W
Capacity	2304Wh (51.2V/45Ah or 3.2V/720000mAh)
Battery type	LiFePO4
Power Indicate	LCD display
LCD Display	Battery remaining capacity, Battery fault, total output power, Over temperature, input power, Charge time, discharge time
AC Input	AC 1200W
AC fully Charging Time	About 2-3H
Solar Controller Model	MPPT
Solar Charging Input	800W max
Charging Temperature Range	32~104 (0 ~40)
USB Output	Type-C output: PD 100W*2 USB output: QC3.0(18W/5V3A, 9V2A, 12V1.5A)*4
Cigarret Lighter output	12V/10A(120W)
DC output	12V/5A/DC5521*2(total 120W)
LED light	6-10W SOS, flashlight
AC Output	Output waveform: pure sinewave Output voltage: 110V(US/JP) or 220V(EU/UK/AU/CN) (AC output voltage and frequency are customized, according to different countries and regions. Please refer to the actual product) Output frequency: 50/60Hz Peak AC output: 4800W AC continuous output: 2400W
Discharging Temperature Range	14~104 (-10~40)
Product size/Weight	410*290*290mm/about 24kg
Carton Size/Weight	46*34*40CM/about 25Kg/1PCS
Protections	over-charging, short-circuit, low-voltage, over-temperature and over-discharging protection
Color	Oranger+gray, Blue+gray, Red+gray, Green+gray
Housing Material	ABS+PC (fireproofing V0)
Working Temperature	-15~45
Operation Humidity	10%~90%
Standard Package Include	1*Q2400 portable power supply, 1*User Manual, color box packaging, 1*MC4 charging cable, 1*vehicle charging cable, 1 AC cable
Warranty	12 months

9 Protections Strictly Abide By Charging Safety

Overcurrent protection
Short-circuit protection
Over discharge protection
Low temperature protection
High temperature protection
Overvoltage protection
Overload protection
Signal interference protection
Overcharge protection

Large capacity high power
Constant electricity
day and night

2400W



Lithium iron
phosphate battery



Two-way fast charging

Three times faster

MIQ power Q2400 3h

Other 9h

Other



From the inside out
Layer upon layer
protection and security



About security You have to do it to the extreme



Ultra-long life
Cycle charge
3000 times



Independent cell
Protection
from impact



Pure sine wave
Non-destructive
apparatus

UL

UL standard
Certified cell





Independent cell
Exempt from
bumps and bumps

Cooling system
Ensure a good
operating
environment

Practical details

Elaborate technology



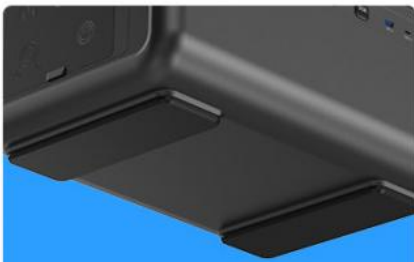
Global intelligence screen display

The state of the machine is visible at a glance

Dual-purpose LED searchlight



94V-0 grade fireproof housing



Bottom damping silicone



Port rich

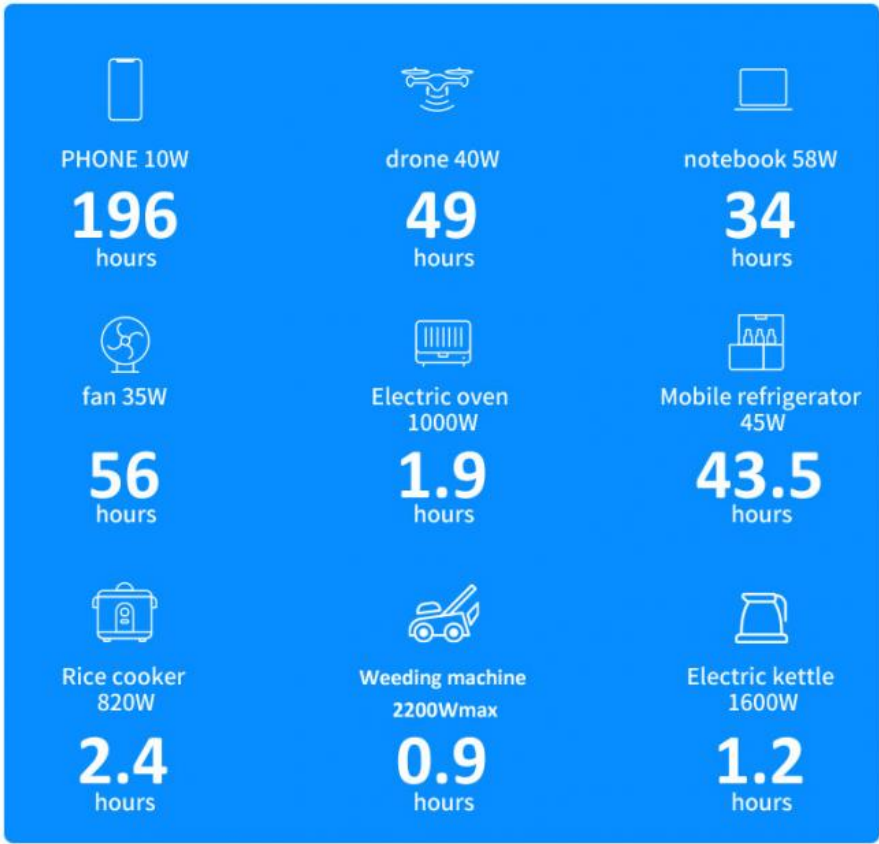


- 1 Ac power button
- 2 Ac power socket X4
- 3 Cooling fan
- 4 Portable handle
- 5 Wireless Charge (15Wmax)
- 6 Portable handle

Have fun all the way Constant electricity day and night

Super capacity, support car, solar fast charging,
Provide reliable power storage for long road trips







MINKO (SZ) TECHNOLOGY CO., LIMITED

+8613539872669

yumiko@szminko.com

evstationcharger.com

309 West Lake Industrial Zone, Cuishan Road, Dongxiao Street, Luohu District, SZ